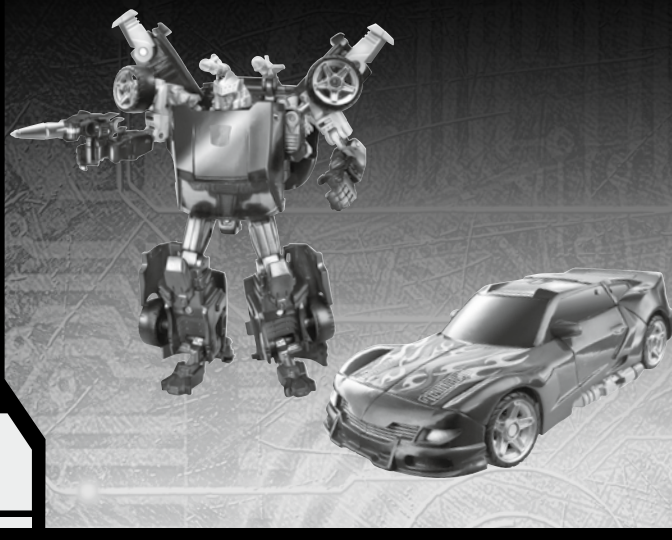


TRANSFORMERS

TURBO TRACKS™

LEVEL: 0 1 2 **3** 4 5
INTERMEDIATE

AUTOBOT™



WARNING:

CHOKING HAZARD—Small parts.
Not for children under 3 years.

AGES 5+
25960/98447 Ass't.

TRANSFORMERS.COM

NOTE: Some parts are made to detach if excessive force is applied and are designed to be reattached if separation occurs. Adult supervision may be necessary for younger children.

CHANGING TO ROBOT

1. Insert pin A into the rear of the car.

2. Rotate the rear hatch back.

3. Rotate the rear hatch forward.

4. Rotate the rear hatch down.

5. Rotate the rear hatch up.

6. Attach part B to the rear hatch.

7. Rotate the front of the car up.

8. Rotate the front of the car down.

9. Rotate the front of the car up.

10. Rotate the front of the car down.

11. Rotate the front of the car up.

12. Rotate the front of the car down.

13. Rotate the front of the car up.

14. Rotate the front of the car down.

15. Rotate the front of the car up.

16. Rotate the front of the car down.

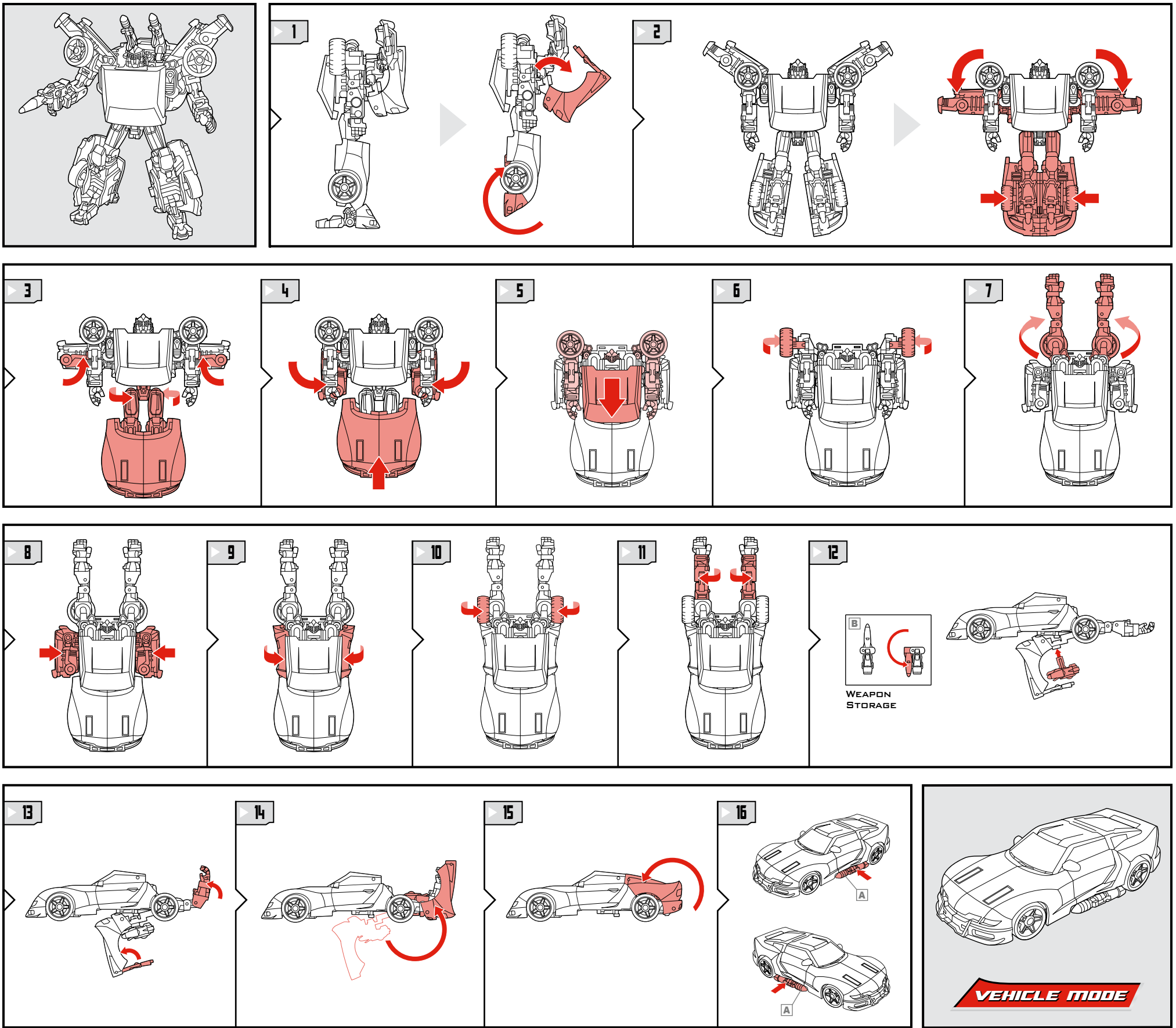
17. Rotate the front of the car up.

18. Rotate the front of the car down.

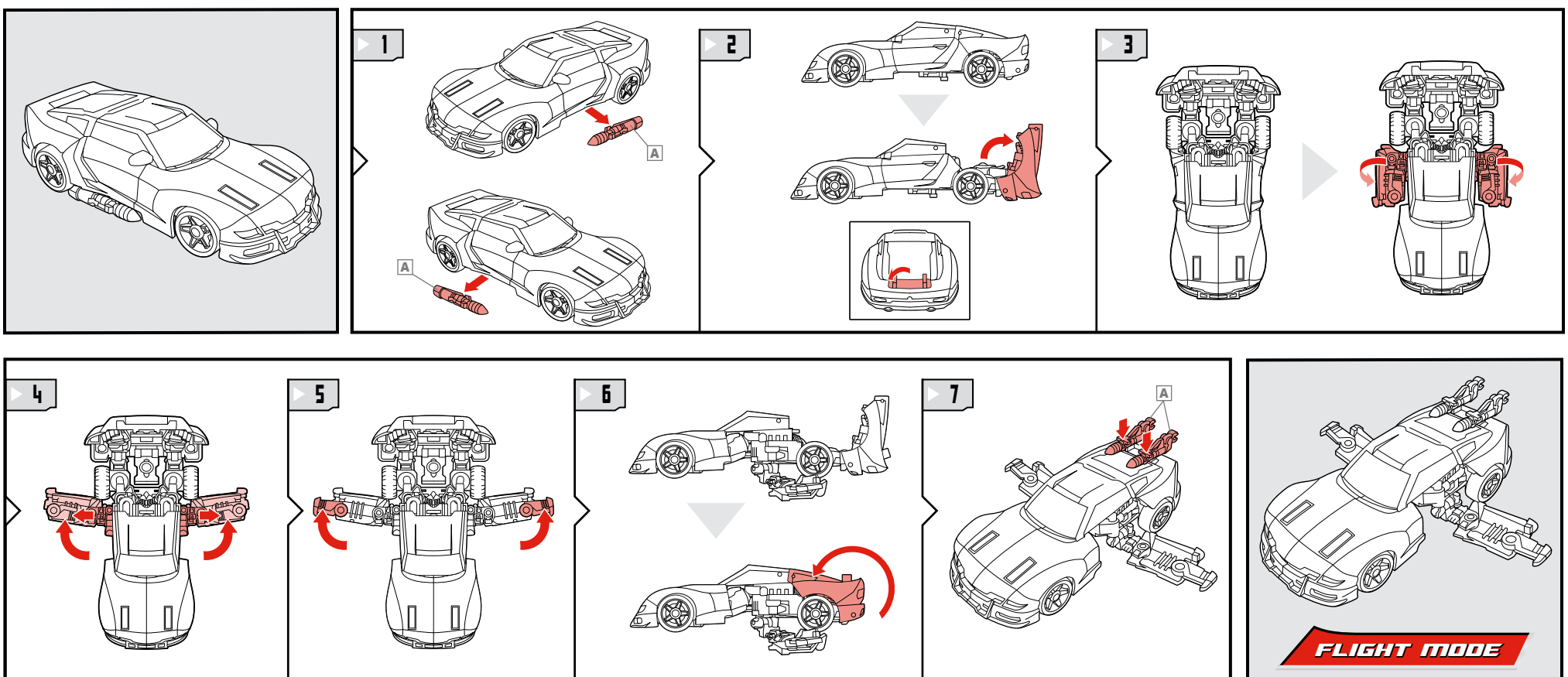
19. Attach pin A to the top of the robot's head.

ROBOT MODE

CHANGING TO VEHICLE



CHANGING TO FLIGHT MODE



P/N 7106220000

Product and colors may vary.



© 2010 Hasbro. All Rights Reserved.
TM & © denote U.S. Trademarks.
Manufactured under license from TOMY Company, Ltd.

Retain instructions for future reference.

Some poses may require hand support.



NEED HELP?

TRANSFORMERS.COM/INSTRUCTIONS



Not suitable for children under 3 years because of small parts – choking hazard.